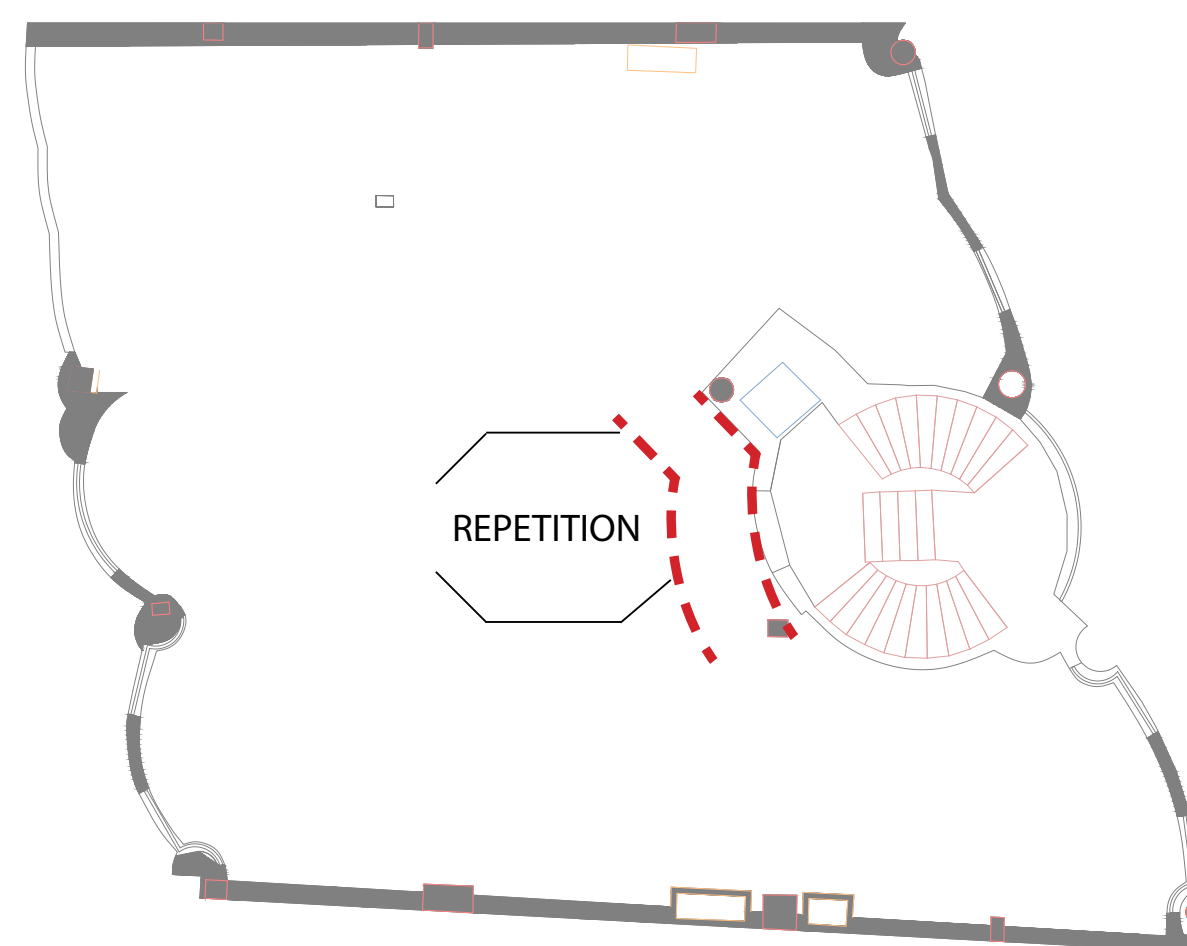
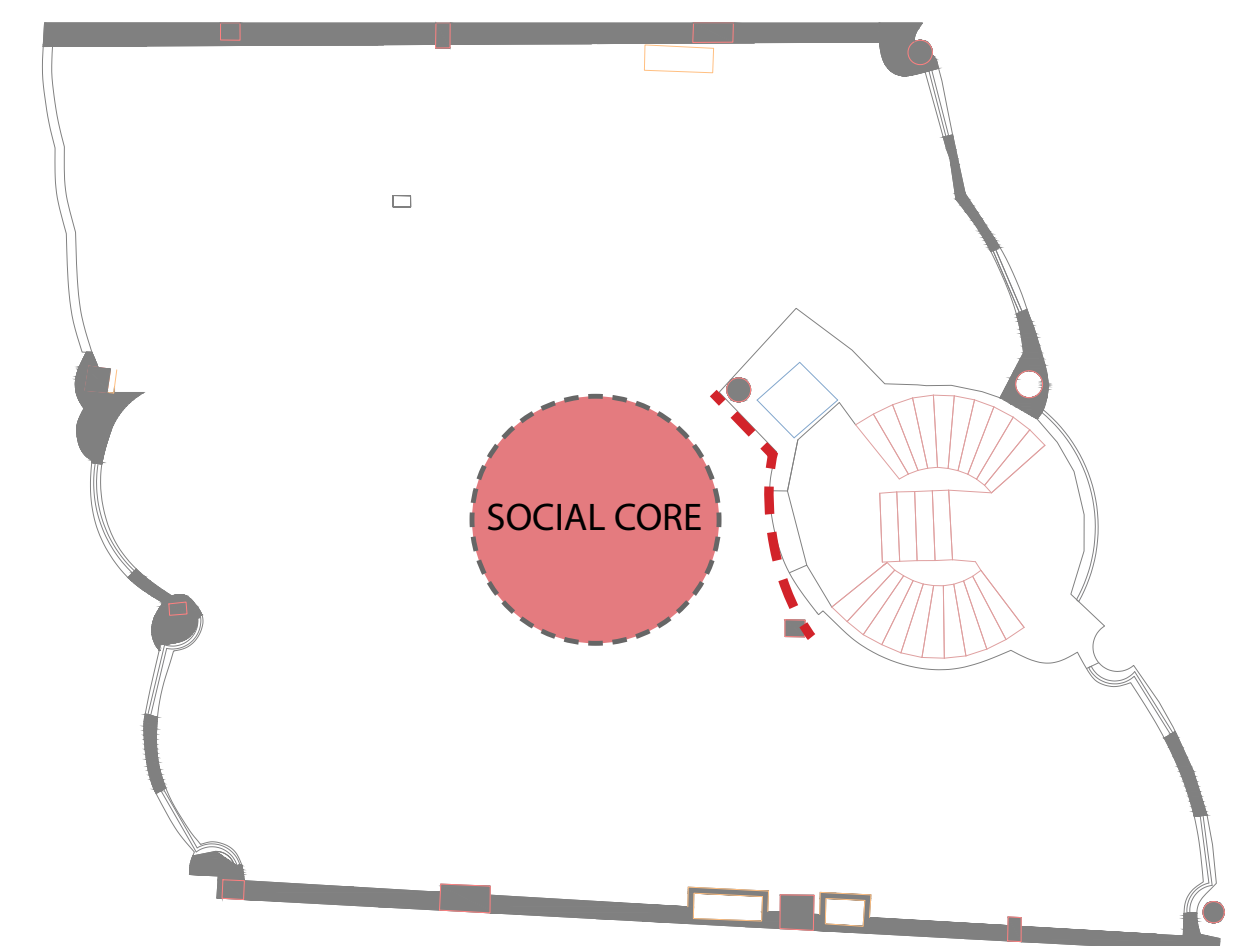


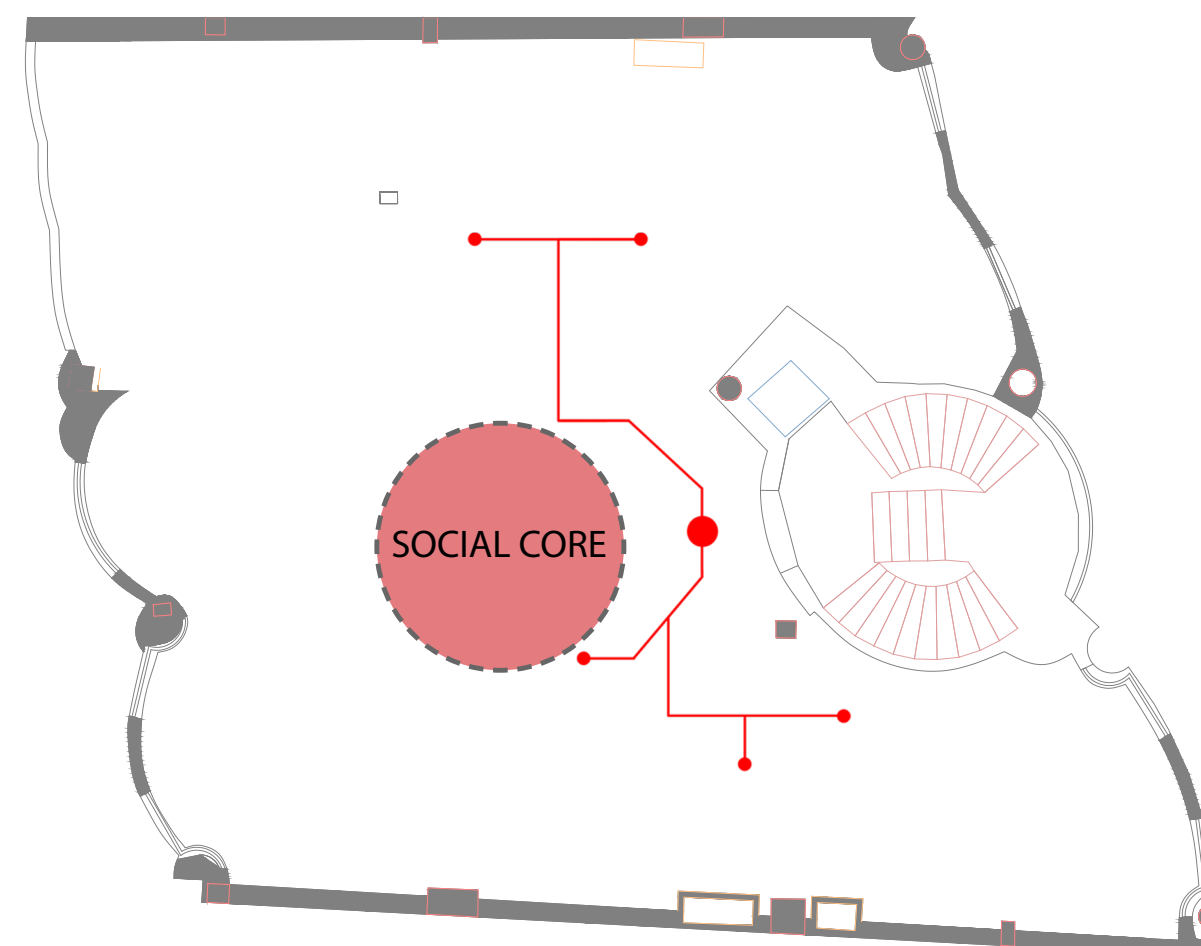
Deriving a new spatial identity through the reinterpretation of the space's own architectural language.



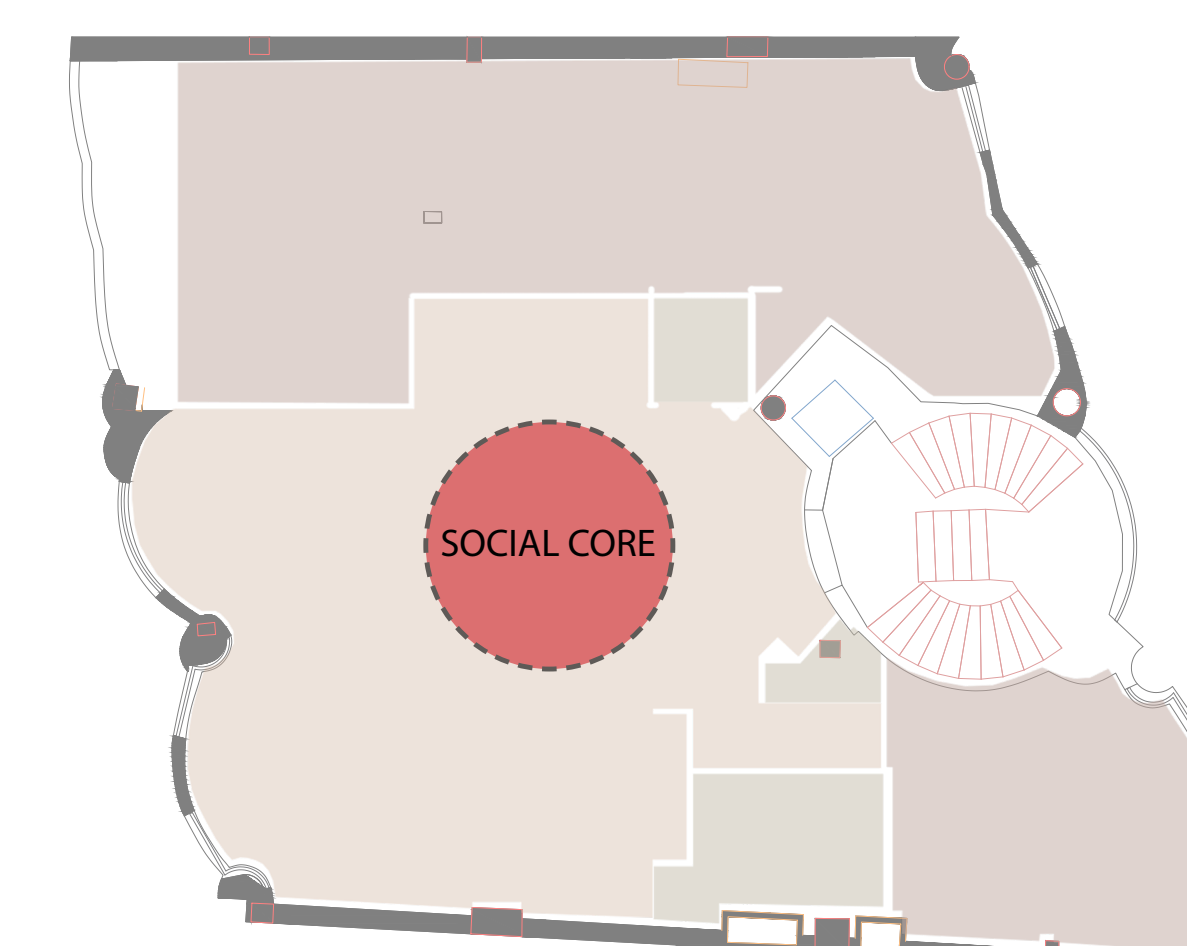
A form that is born from within the space, not from external imposition



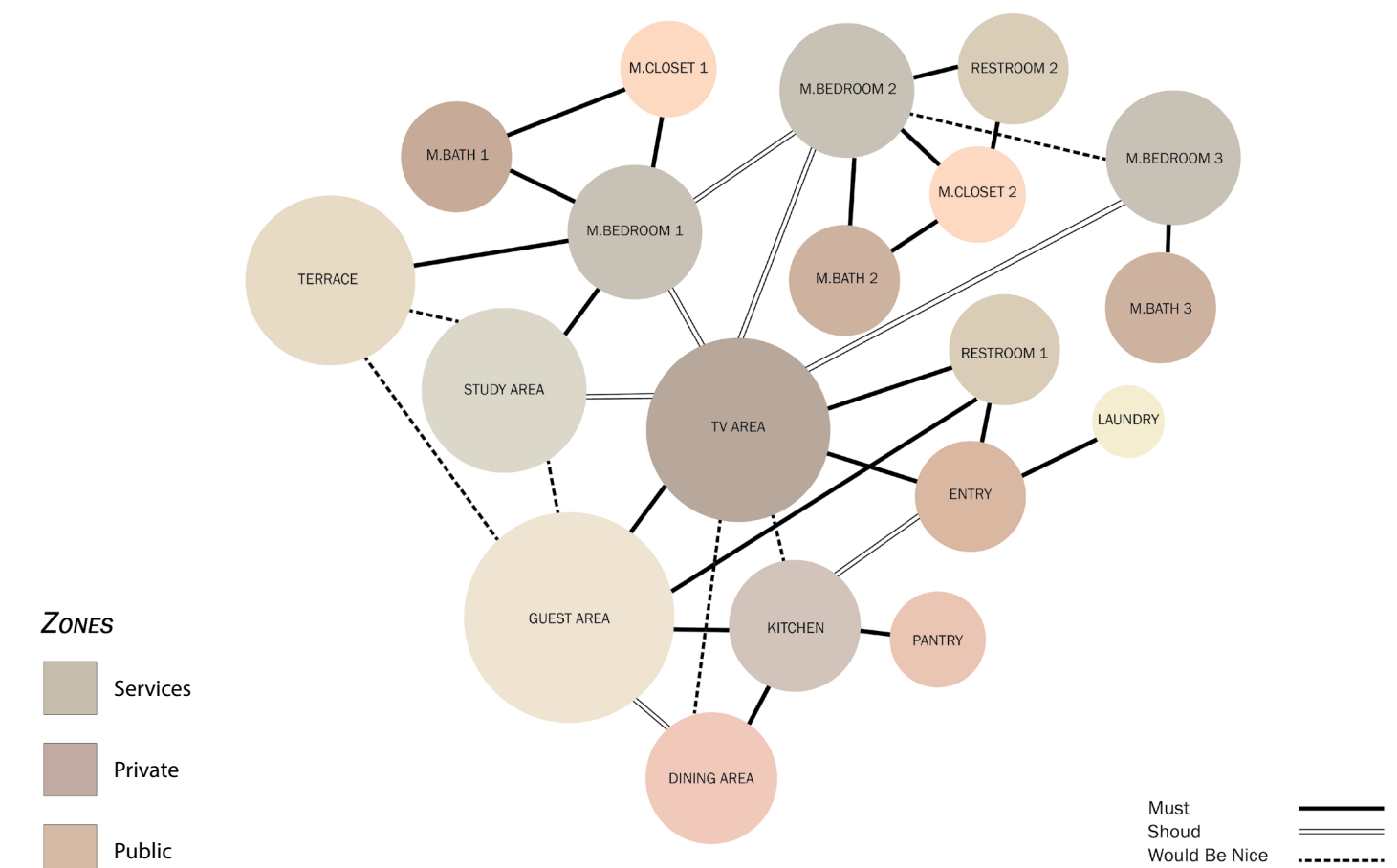
Organizing the layout around a Social Core, a performative void where circulation, pause, and interaction converge.



Circulation Plan
The spatial circulation is also shaped through this approach

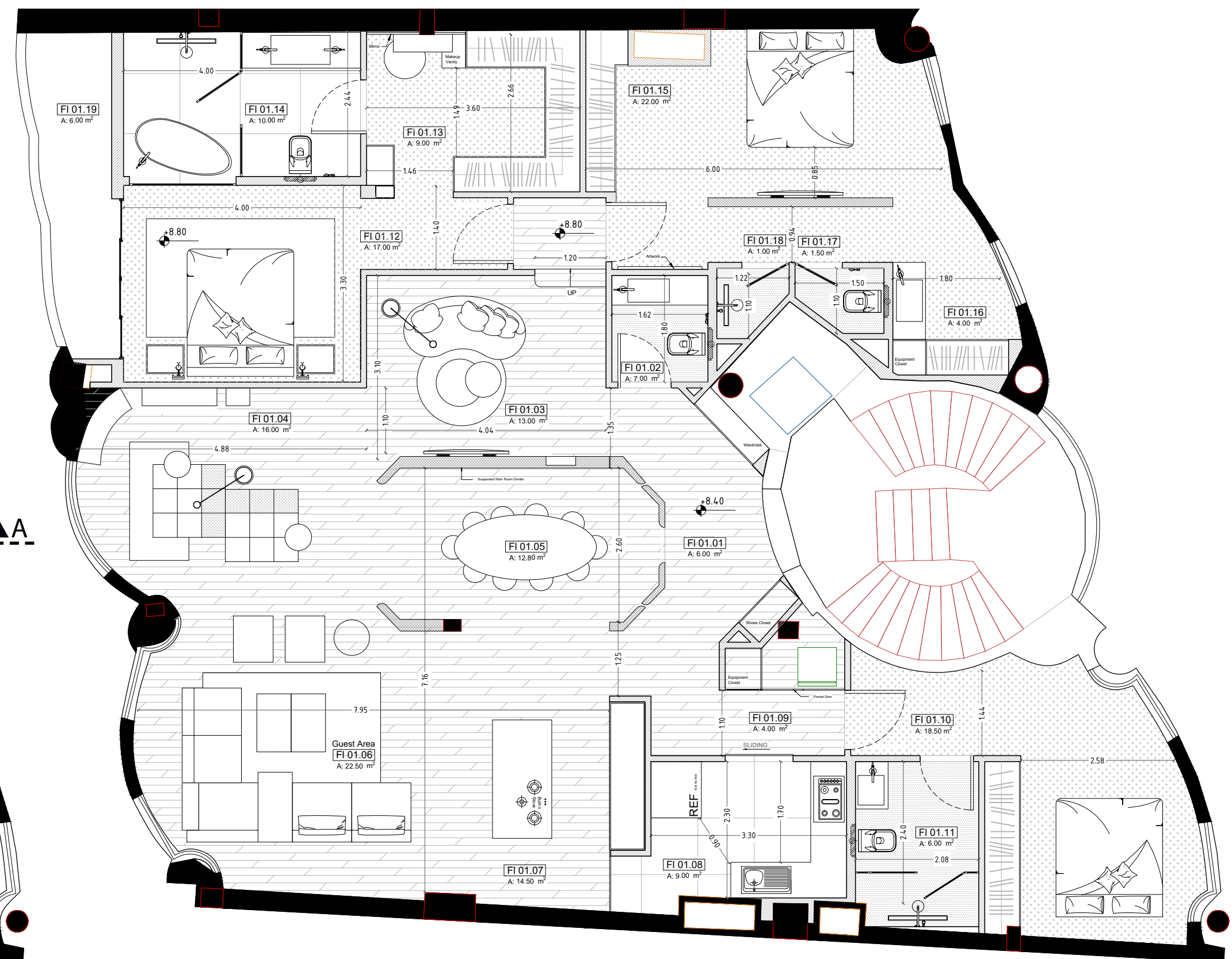
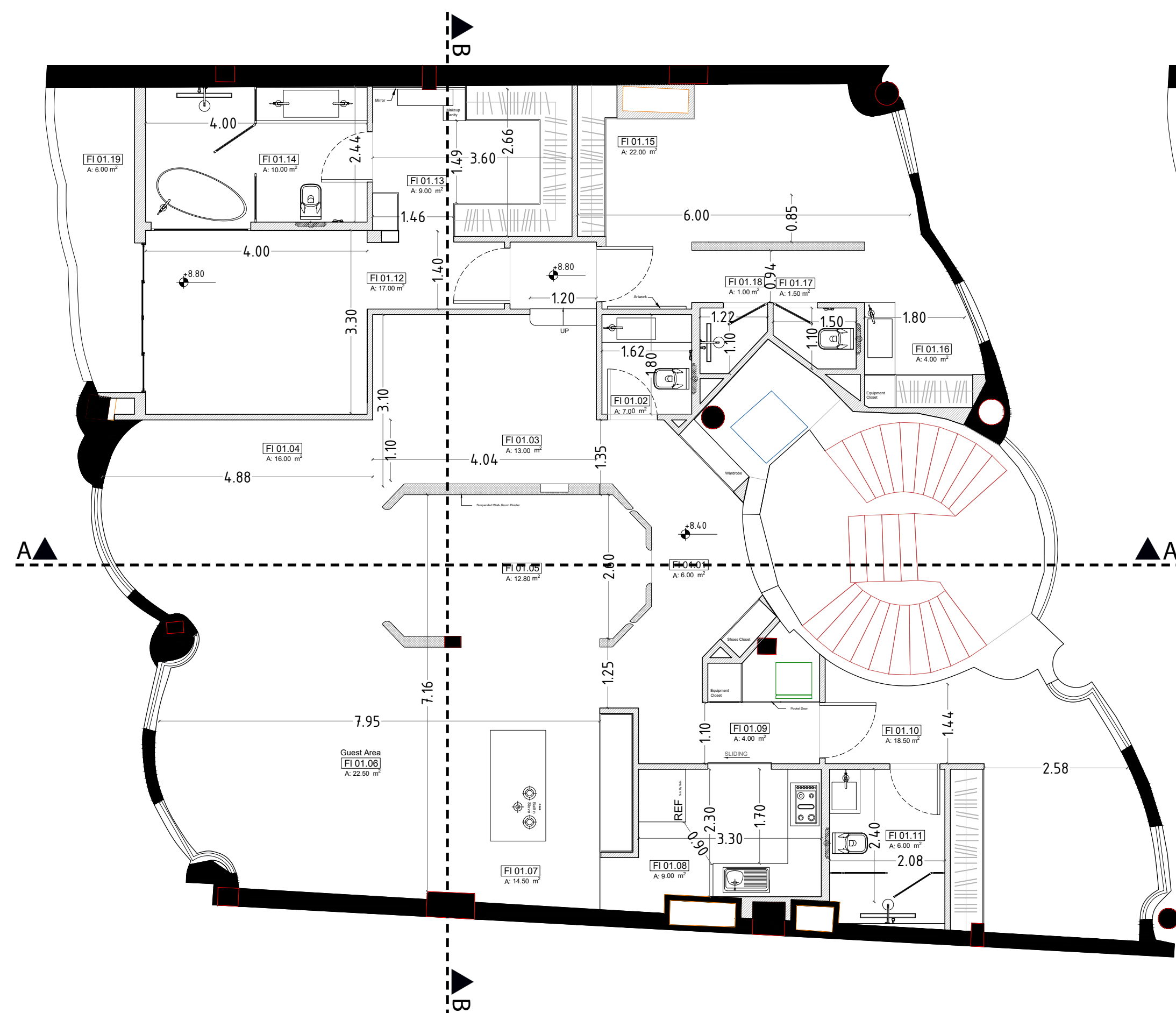


Zoning Plan

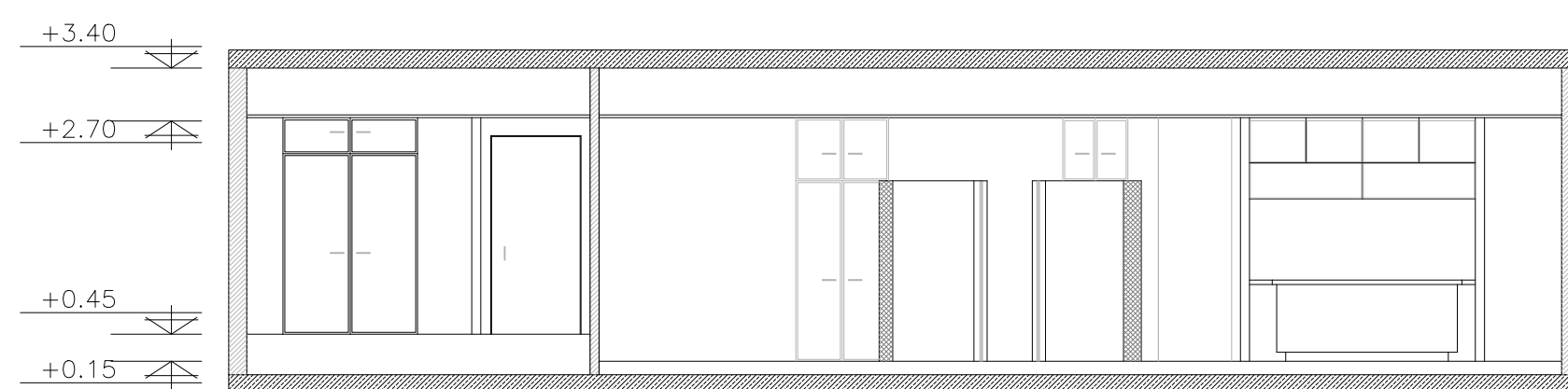
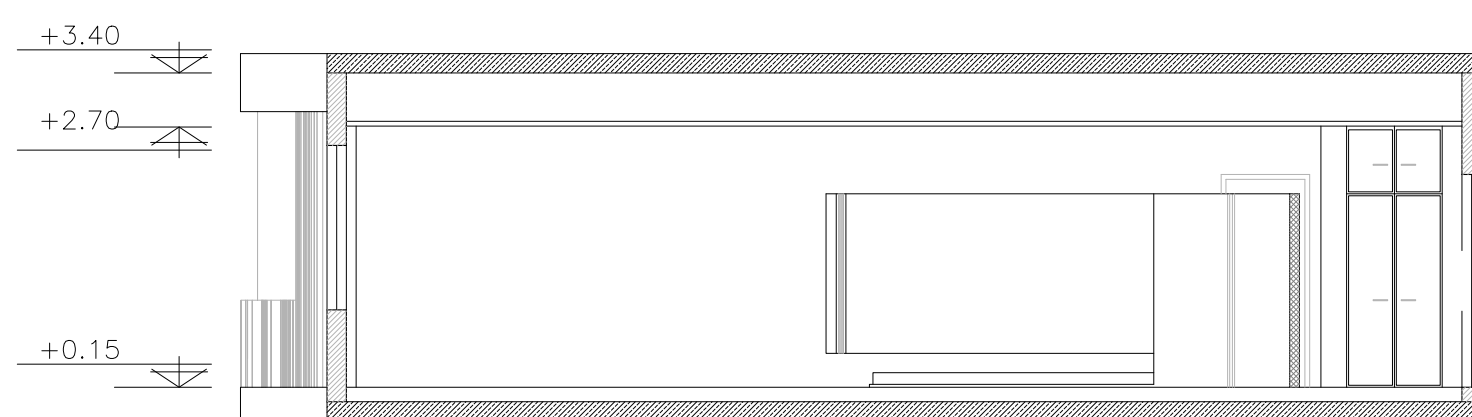


ENDOGENOUS ARCHITECTURE

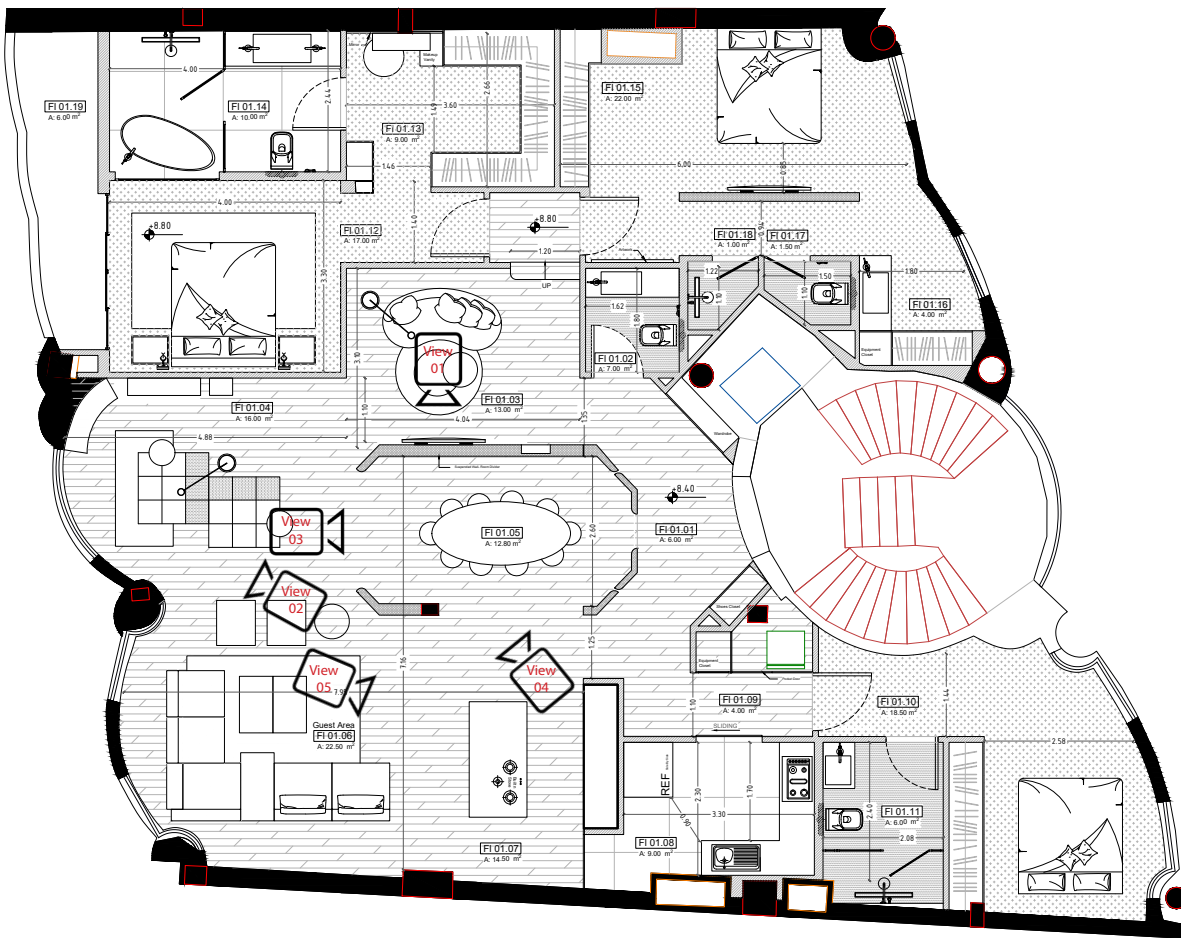
The idea of “form endogeny” has been chosen as the fundamental principle of the design. The entrance form is not conceived as an added element, but rather as a living part born from the very plan itself, A point from which spatial distribution, movement, and the residential experience begin. By focusing on the elimination of unnecessary corridors and the creation of a functional central space, the spatial structure is shaped around free flow, operational simplicity, and spatial clarity. Each space naturally and unforcedly extends from the next, removing the need for redundant circulation. Here, architecture does not seek to be performative; rather, it aims to provide an authentic response to contemporary patterns of habitation with a functional yet human-centered approach.



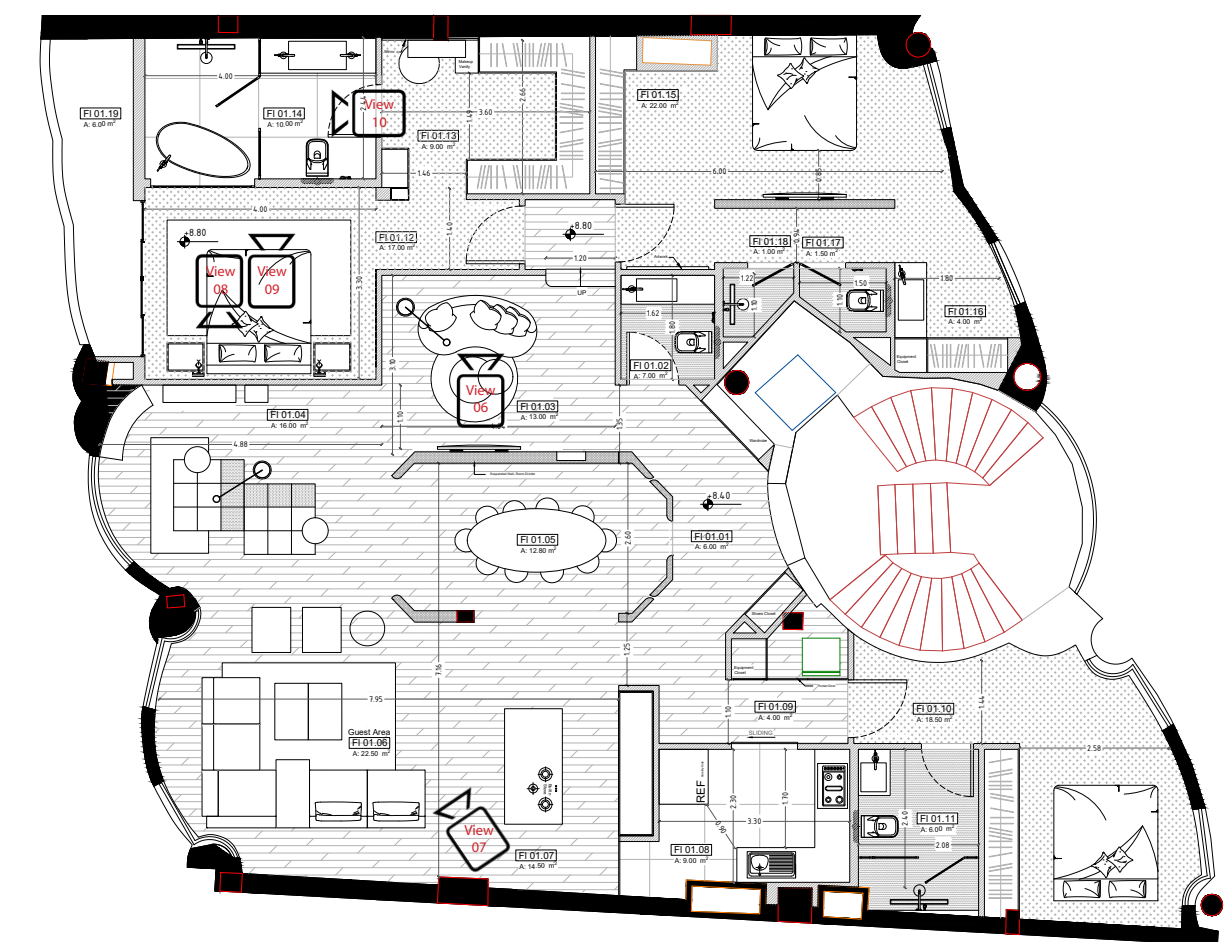
- 01: Entry
- 02: Restroom
- 03: TV Area
- 04: Study Area
- 05: Dining Area
- 06: Guest Area
- 07: Show Kitchen
- 08: Pantry
- 09: Laundry Area
- 10: Master Bedroom NO.3
- 11: Master Bathroom NO.3
- 12: Master Bedroom NO.1
- 13: Master Closet NO.1
- 14: Master Bathroom NO.1
- 15: Master Bedroom NO.2
- 16: Master Closet NO.2
- 17: Restroom NO.2
- 18: Bathroom NO.2
- 19: Terrace

[illegible]

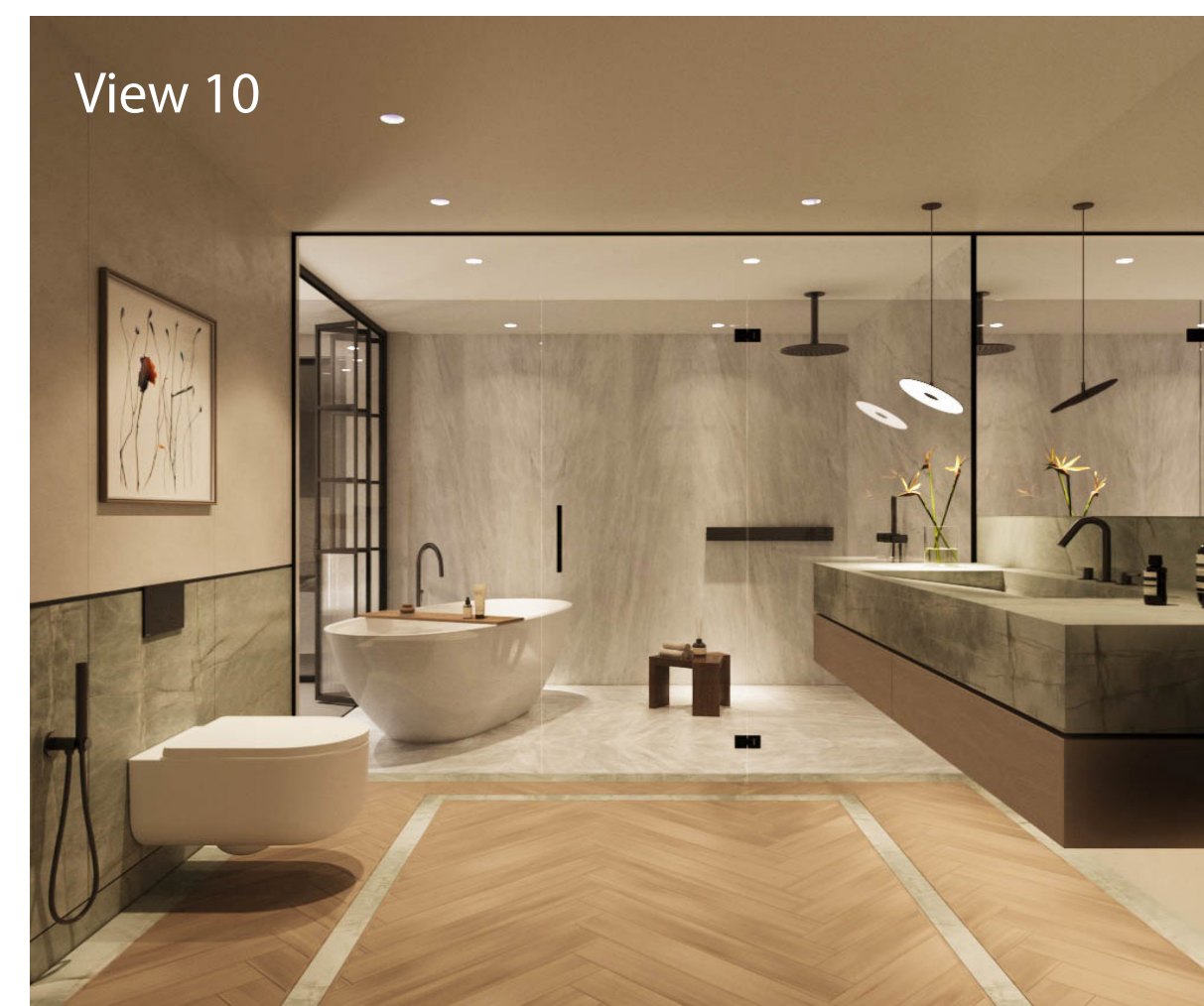
The criteria outlined in the table below have been thoroughly integrated into the design process to ensure the project's practical viability and successful execution.



View 06



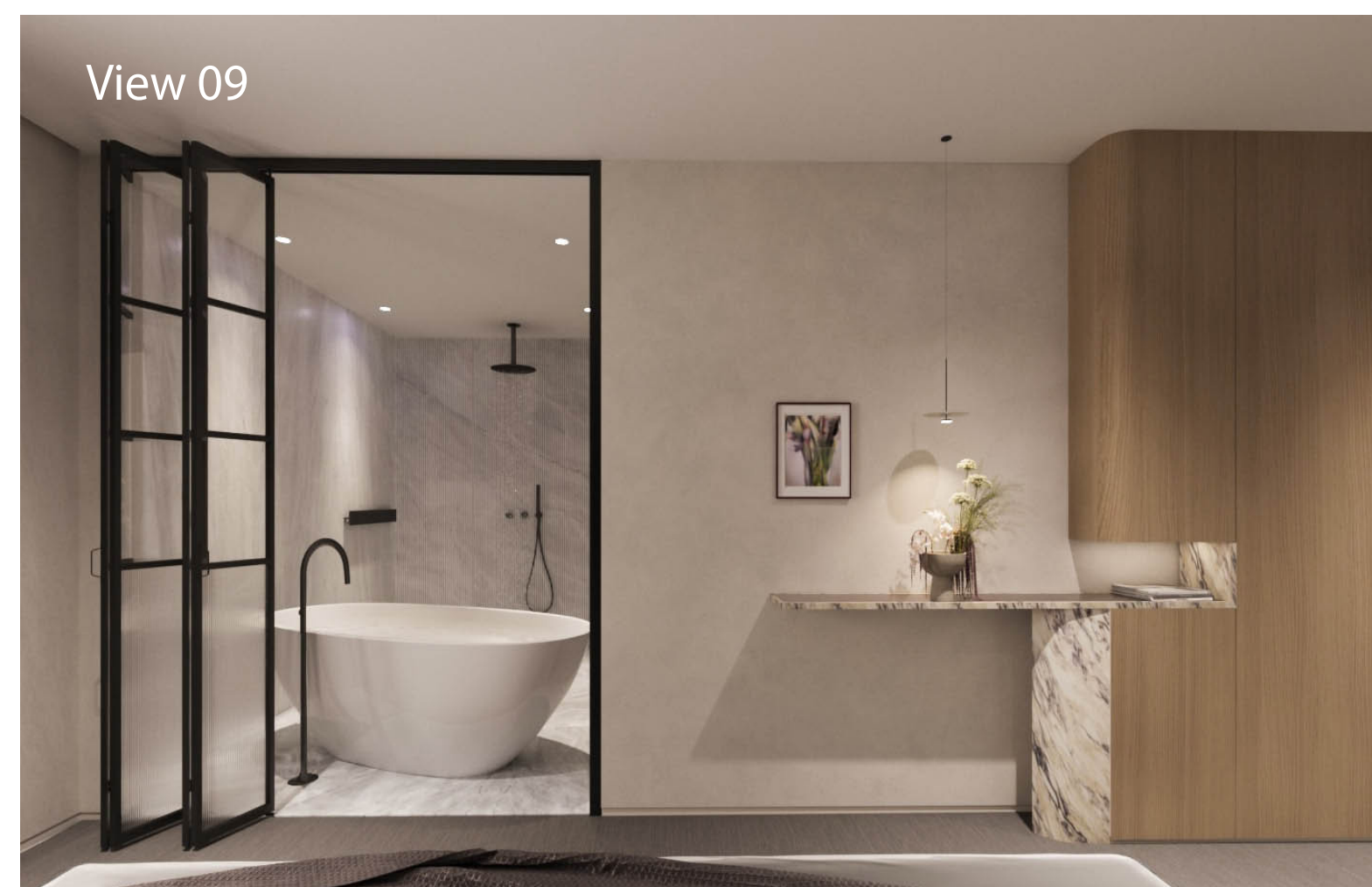
View 10



View 08



View 09



View 07

